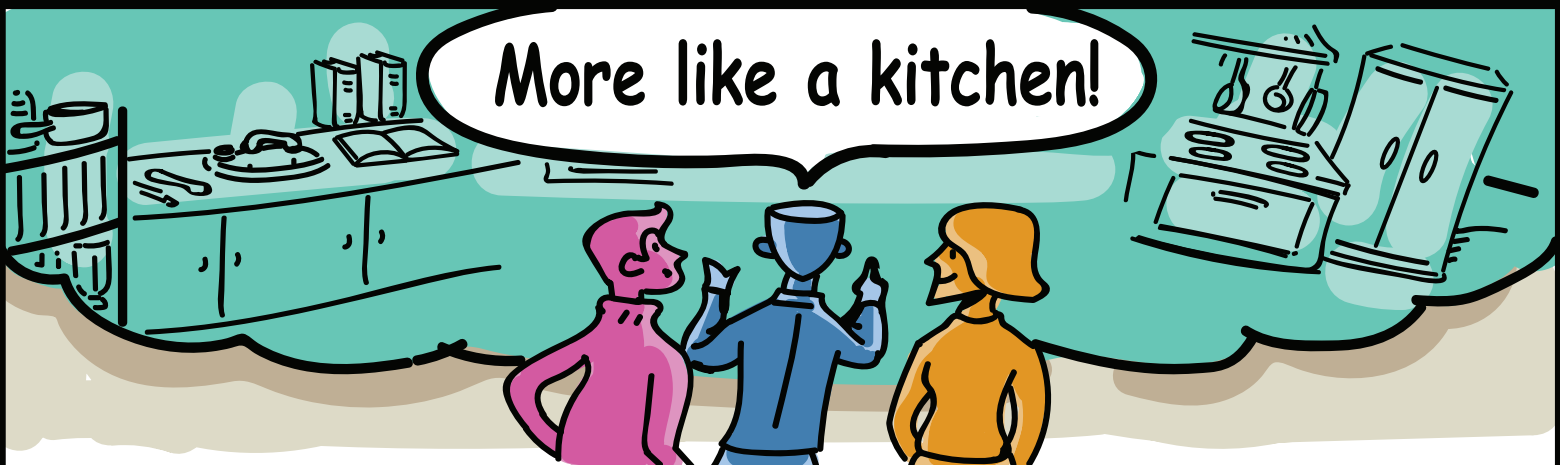
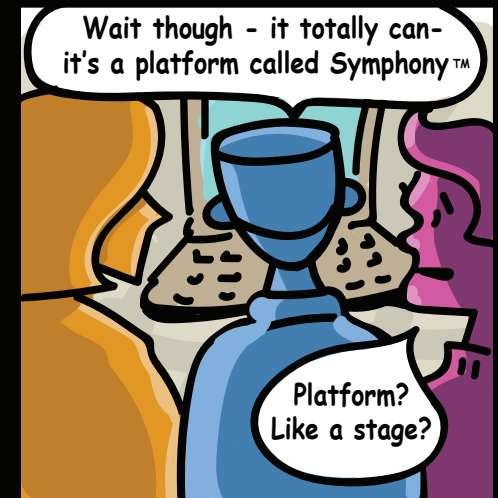
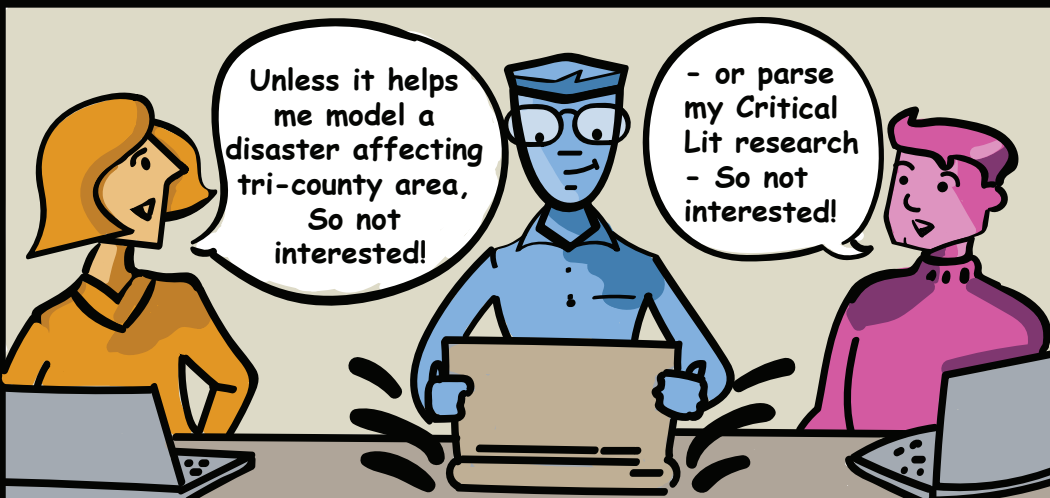
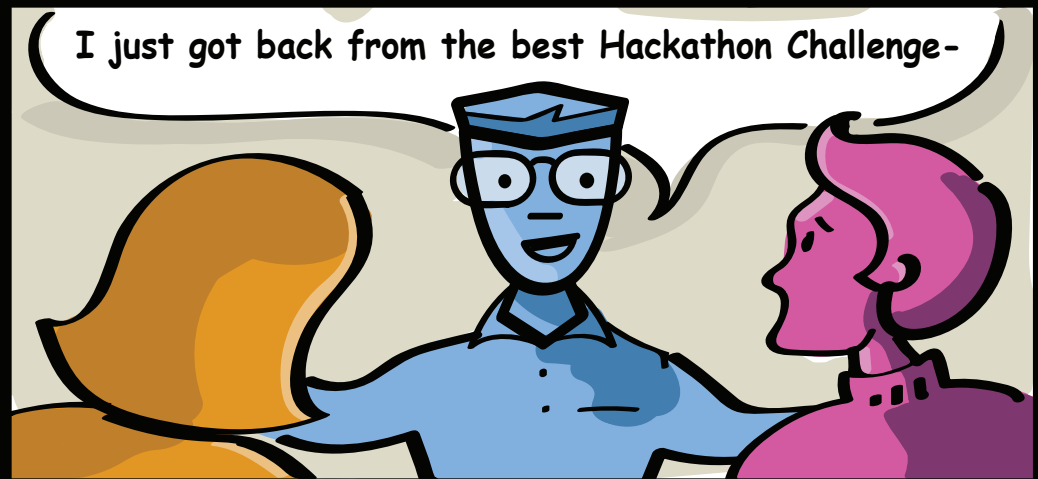
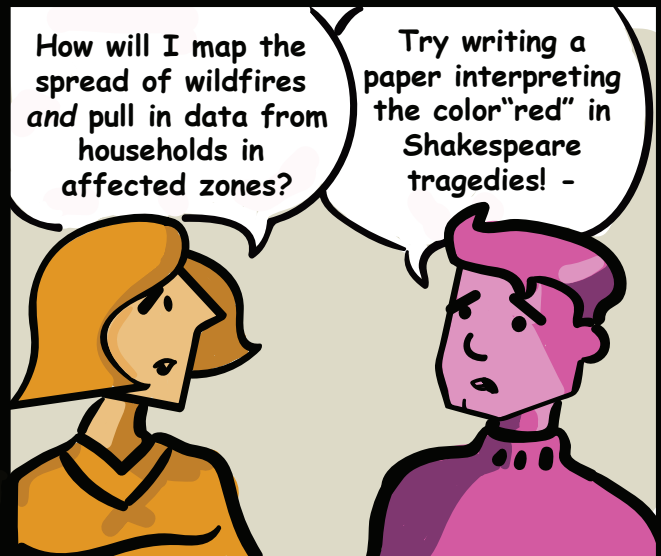




# SYMPHONY™

## RECIPES FOR SUCCESS

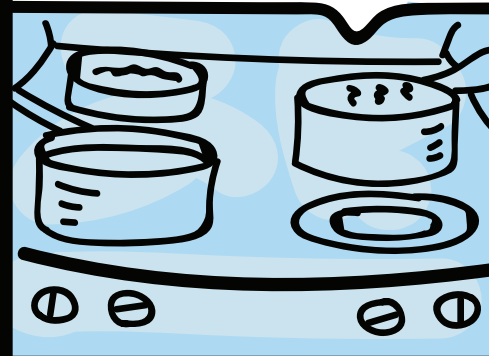


**COLLECT** - First, you pull in your ingredients, your big data - and then Symphony™ builds these secure analytic cells, which is like a protected space for doing your work -

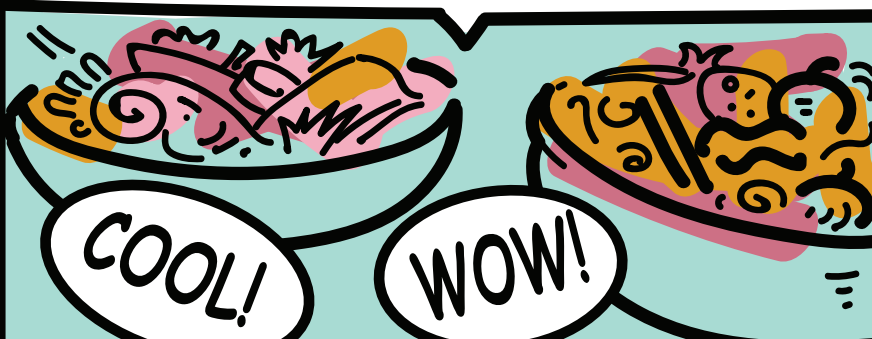


**CHOOSE TOOL** - You can pick an automated "recipe" or other utensils to set up whatever environment, software, documentation, or security configurations you need -

**TEST/ANALYZE** - and then you can experiment with the data - test and analyze it however you usually do -



**VISUALIZE** - and then you present your finished product!

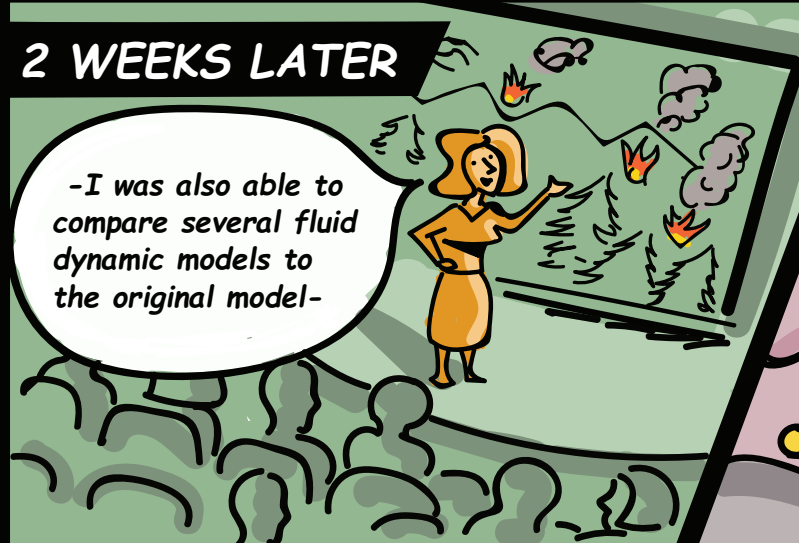


And it's super secure - your recipes and ingredients stay private while you share the results! So no worries about anyone trying to get into your data - Wanna try it?

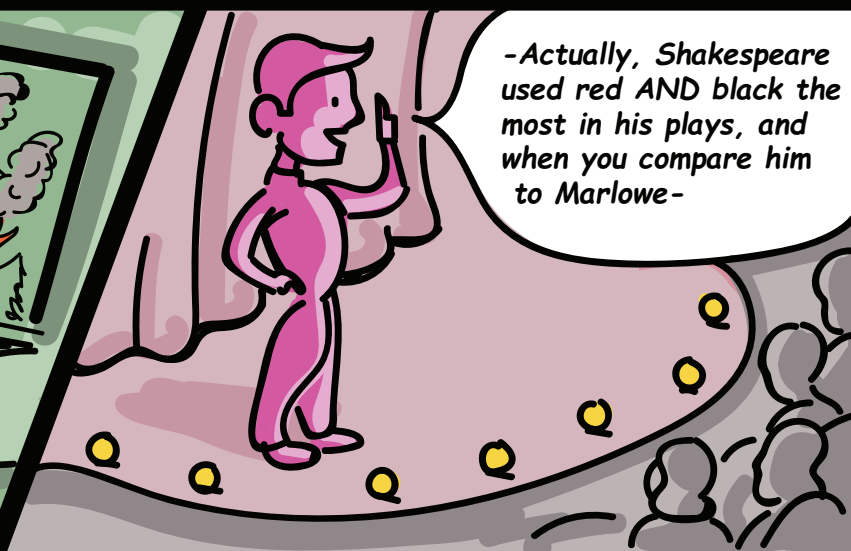
Sure!

**2 WEEKS LATER**

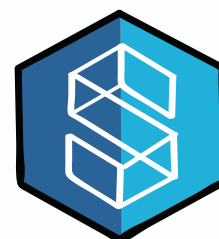
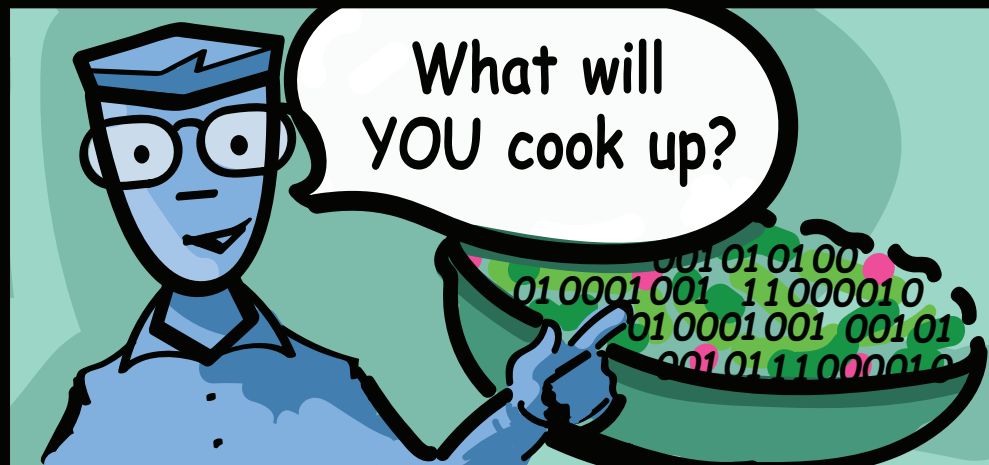
-I was also able to compare several fluid dynamic models to the original model-



-Actually, Shakespeare used red AND black the most in his plays, and when you compare him to Marlowe-



What will YOU cook up?



Contact us  
[Symphony@mitre.org](mailto:Symphony@mitre.org)

© 2019 The MITRE Corporation. All rights reserved.  
Approved for public release. Distribution unlimited.  
Case number: 19-0590